



# LiveSafe and Touch-Controller

*Connecting a Smart Safe and a cash counter for instant visibility of all cash*

 **TellerMate**

# What makes the LiveSafe-Touch combination so special?

Smart safes are great for keeping your cash secure, but as a standalone solution they often can't fulfil the complex cash management challenges faced by retailers. By pairing a smart safe such as LiveSafe, with our Touch cash counter you can create an extremely robust and cost effective solution, especially compared to larger and more expensive solutions.

Our LiveSafe intelligent compact smart safe comes into it's own when paired with the Tellermate Touch. **Your Touch device can be used as the interface for your network of LiveSafes.** This enables you to count cash-drawers and LiveSafe contents seamlessly and efficiently, all while maximising security throughout your business.

By pairing the Tellermate LiveSafe and Touch cash counter together, the cash stored in your LiveSafe can instantly be added to your counts. This means that less time is spent counting cash, and less people handle the cash.

This solution, which is unique to Tellermate, also enables you to make use of our cloud-based Touch Viewer software which enables instant visibility from a central location or headquarters. We also provide a software development kit, enabling you to create your own integrations.

## *Is the LiveSafe-Touch-solution the right choice for you?*

The LiveSafe and Touch solution is perfect for those who want a high-impact, low-cost solution that requires no POS integrations. This plug-and-play ability means lower implementation costs and quicker ROI.

Of course, all of our solutions are modular meaning that you can take Touch or LiveSafe as standalone devices, and add further Tellermate solutions in the future.

To arrange a consultation with our team please contact us using the details below.

*sales.uk@tellermate.com*  
*Tel: 01685 637 123*

# Count cash securely and instantly, without even having to touch it

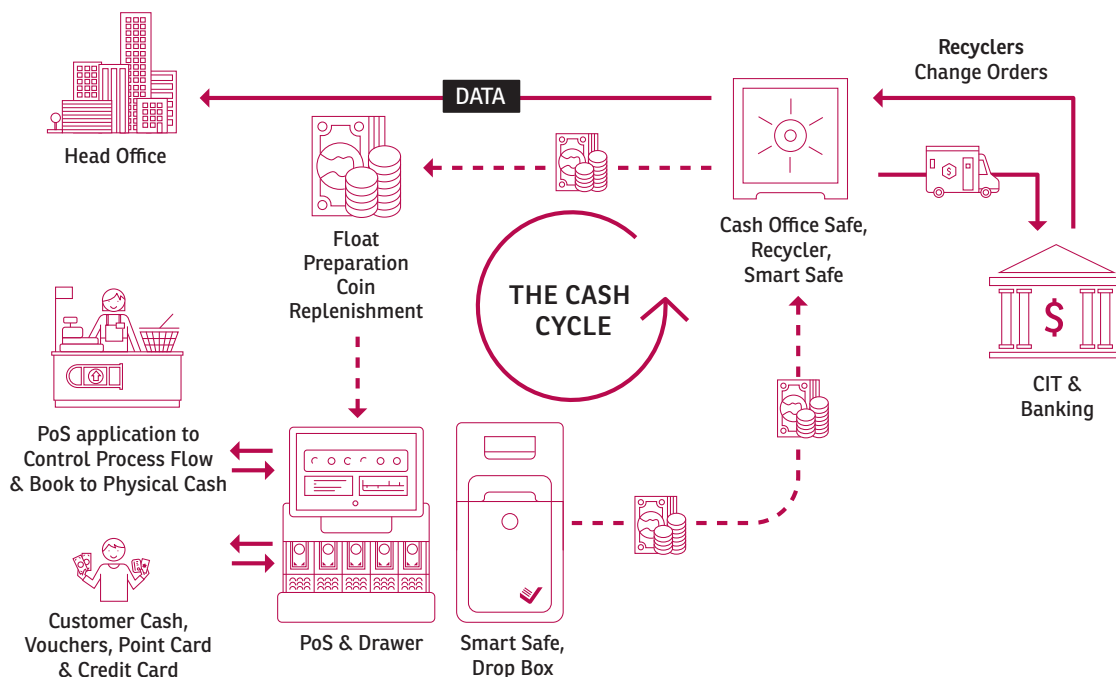
Having a safe near your point of sale means that cash can be secured immediately after the exchange of goods. Our intelligent technology takes this to the next level, enabling you to increase productivity and streamline your processes.

**Protecting Your Assets:** Smart safes work in a similar way to traditional safes in that they store your cash securely – reducing the opportunity for theft. But, with note validators built in as standard, LiveSafe can discriminate by denomination and also protect your business from accepting counterfeits.

**Reduce Time Counting Cash:** When notes are fed into LiveSafe they're counted automatically. This means less opportunity for error and less time spent counting cash.

**Improve Your Audit Trail:** LiveSafe's integration with our Touch Viewer interface gives you full visibility of the cash secured in your LiveSafe network and can generate reports automatically, improving visibility and efficiency.

**Optimize CIT Processes:** By monitoring the data generated by LiveSafe you'll know exactly when your cash needs to be collected. This means you can optimize your CIT provision to avoid unnecessary collections, reducing your costs and carbon footprint.



*"I've worked with major retailers globally for 30 years to help them improve their cash processes. The emphasis is no longer just on security, but now retailers also focus on speed, accuracy and efficiency. The Tellermate LiveSafe and Touch solution delivers on all of these objectives, and is more cost effective compared to larger solutions like recyclers and standalone smart safes. It's truly an enterprise solution for the next generation of retail."*

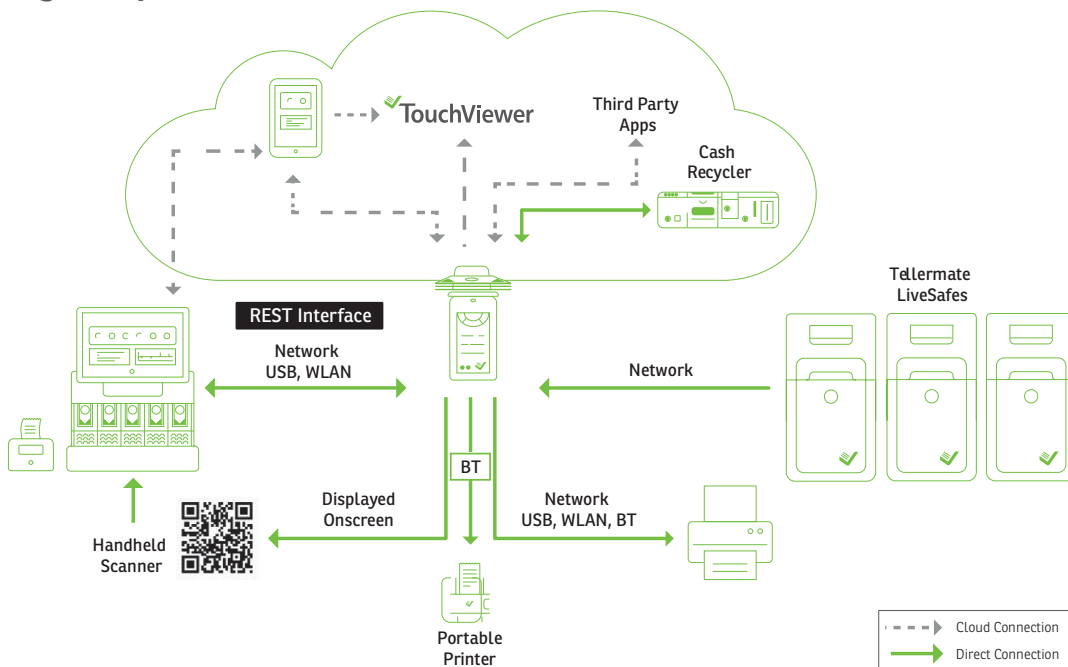
*Mike Cowling - National Sales Manager, UK*



## Touch-Cash-Controller is so much more than 'just' a cash counter

# Touch

The Tellermate Touch is the most versatile, connective cash counting device available today. This flexibility means that Touch can integrate with almost any cash management solution that your business might require.



The intuitive touchscreen interface makes it easier to enter balances, reference numbers and media items, so you can reconcile your cash drawer in under one minute.

All count data and Live-Safe contents can be sent to the Touch-Viewer Online Journal or simply be printed using USB, Bluetooth or Wi-Fi to your chosen printer. And because Touch is an internet-of-things-cash counter, you can download firmware and currency updates from the Cloud.

# TouchViewer

With TouchViewer you'll get instant overview of all cash in your business. This helps to see cash-trends faster and make better CIT-decisions.

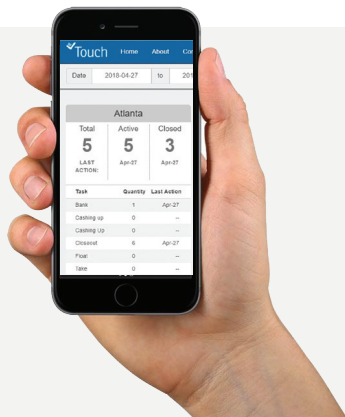
The **Tellermate Touch** is a world first and the only cash counter with its own cloud-based application, allowing remote and on-site user access to the full count data from your PC, tablet or mobile device. We call it **Tellermate Touch Viewer**.

Check that stores have completed their cash counts from head office or on the move. Full information on the cash count is available, broken down into notes & coins with date and time stamps. You can export data with a single click.

You can simply use the Tellermate Touch and Viewer in as part of a wider end-to-end cash management solution with LiveSafe. And, because the Touch is a connected device, you can download firmware and currency updates direct from the cloud.

## Mobile Comptability

Access Touch Viewer from mobile devices as well as desktops. This means that whenever, wherever, you can keep an eye on your cash.



## Instant insight for Loss Prevention, Treasury and Operations

- ① Count your coins and notes in under 60 seconds
- ② One-click transmit to the cloud
- ③ Log on to the Viewer to check your team are following cash process

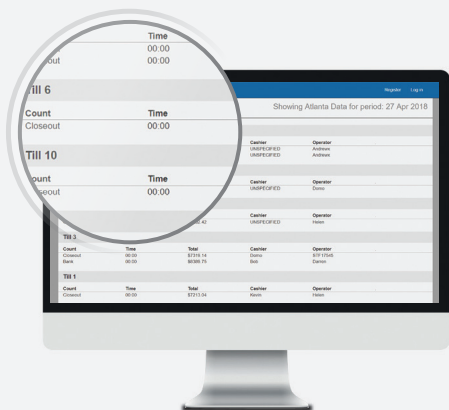
## Store summary

For your chosen date range get a complete overview of cash tasks across your estate. From counting the safe and cash lifts to full banking preparation. Or even spot checks...



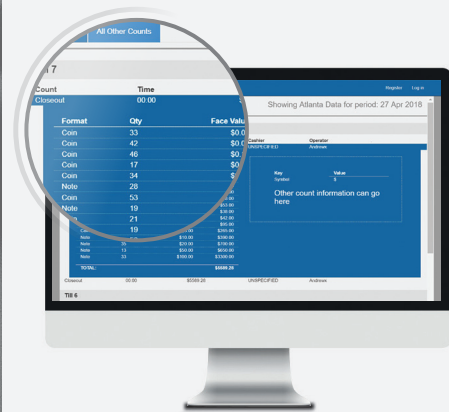
## Store Closeout detail

For any given cash task, see all the tills and counts with timestamp and location. By inspecting the 'last action' taken you can know whether the closeout count has been performed.



## Count detail

By understanding the levels of cash by denomination you will build up a pattern of requirements enabling you to optimise change ordering.





## Validate and secure notes immediately at the point of sale.

LiveSafe has been designed to fit into existing POS counters, ensuring that **integration is simple**.

At the point of sale, large denomination notes coming in from customers can be fed directly into the safe to be **checked for counterfeits** and **securely stored** until the end of the day, or until the safe is full.

Notes accepted into the safe are instantly added to your cash overview, this **minimises cash handling** and **saves time** in your cash processes.

This means less time is spent counting, and less people handle cash.

At the end of the day/shift, or when the safe is full, cash can be removed for CIT pickup or to top up ATMs.

Permissions can be set via **multi-tier electronic security tags** to either activate the note feeder, or for access to the cassette inside. Each user is assigned a tag which allows a **secure audit trail** and **accountability** through your cash processing.



Market-leading Counterfeit Detection



Reusable tamper-evident cassettes



Enhanced Security



Reduce cash handling



Advanced Connectivity and Integration Options



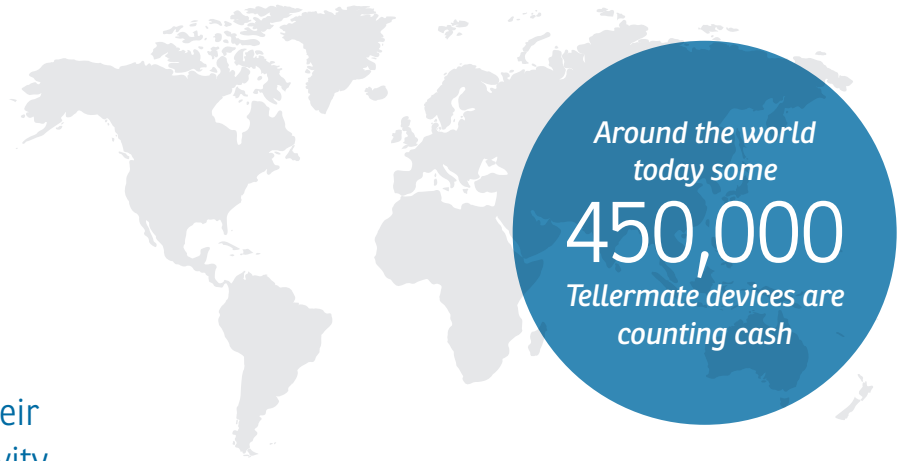
# Tellermate

## People you can count on

We help our customers increase their profits by deterring fraudulent activity, saving time and providing real-time cash management information.

As the inventors of count-by-weight technology, our solutions are among the most reliable, accurate and robust that are available. In having more experience in this industry than any other company, we are at the forefront of innovation, and deliver tangible results to our extensive client base.

Each of these solutions is geared towards addressing common challenges faced by a variety of businesses but our consultative approach means that we can offer customisation that few companies can compete with.



### **LiveDrawer** Intelligent Cash Drawer

Counts your cash in real time by building Tellermate technology into the drawer itself.



### **T-i<sup>x</sup>** Cash Counter

A suite of devices to count your cash drawer in less than 60 seconds.



### **LiveSafe** Intelligent Smart Safe

A connectible & counterfeit detecting safe to help minimise the risk of theft at sales counters, and improve banking processes.



### **Touch** Advanced IOT Cash Counter

Fast and efficient cash counting in under 60 seconds with the world's most connected cash counter.



### **T-cover** World Class Support

An experienced team, dedicated to supporting your Tellermate solution.



# Tellermate is trusted by blue-chip companies around the world

Tellermate is the leading provider of weight-based cash counting devices. We've been in business for over 40 years and have built up a long list of blue-chip clients, including Greggs, Home Bargains, Aldi, Primark and HSBC.

Our solutions enhance the profitability of businesses by optimising their cash handling procedures and minimising associated costs.

Tellermate's global headquarters is in Newport, UK and is home to our R & D, product support and global management teams. To support our international operations, we also have offices in Japan, Spain, Germany, Atlanta and France.

**Put simply, we're the people you can count on.**



#### **Tellermate North America**

+1 (888) 835 7269  
sales@tellermate-us.com



#### **Tellermate UK**

+44 (0) 1633 637 100  
sales.uk@tellermate.com



#### **Tellermate Germany**

+49 (0) 6221-825 893  
sales.de@tellermate.com



#### **Tellermate France**

+33 (0) 170 96 00 41  
sales.fr@tellermate.com



#### **Tellermate Spain**

+34 916 539 472  
sales.es@tellermate.com



#### **Tellermate Japan**

+81-3-5357-1888  
info.jp@tellermate.com



[www.tellermate.com](http://www.tellermate.com)

 **Tellermate**  
Count | Control | Connect