

# CPT UV Light (UV031) Globe Replacement Procedure

## Step 1:



Switch the unit off and unplug the power cable.

## Step 2:



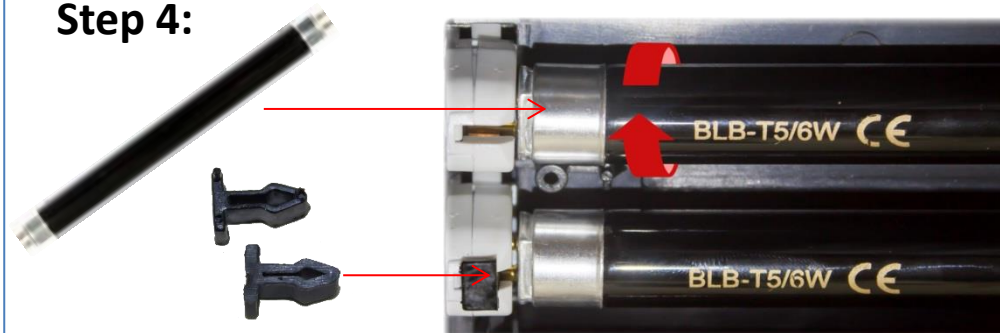
Turn the unit upside down. Remove the clips by pulling them out from either side of the globe.

## Step 3:



Turn the globe 90° and it will become loose, you can then lift it straight out the unit.

## Step 4:



Insert the new globe and twist it 90° to click back into place. Then insert and push down the clips to lock the globe in place. (If the globe is not in position properly the clips will not go in)